



Consumers Energy

Establishing a Sustainable Enterprise Network Model: Now and for the future



A decorative banner at the top of the slide. On the left, it shows a control room with several people working at desks with multiple computer monitors. In the center, there are images of high-voltage electrical transmission towers and power lines. On the right, there is a green-tinted network diagram with various nodes and connecting lines.

Identified Project Related Components

- GIS
- PI Historian
- Newly formed Integration COE
- Future ADMS project
- Company future vision of Distribution Technology

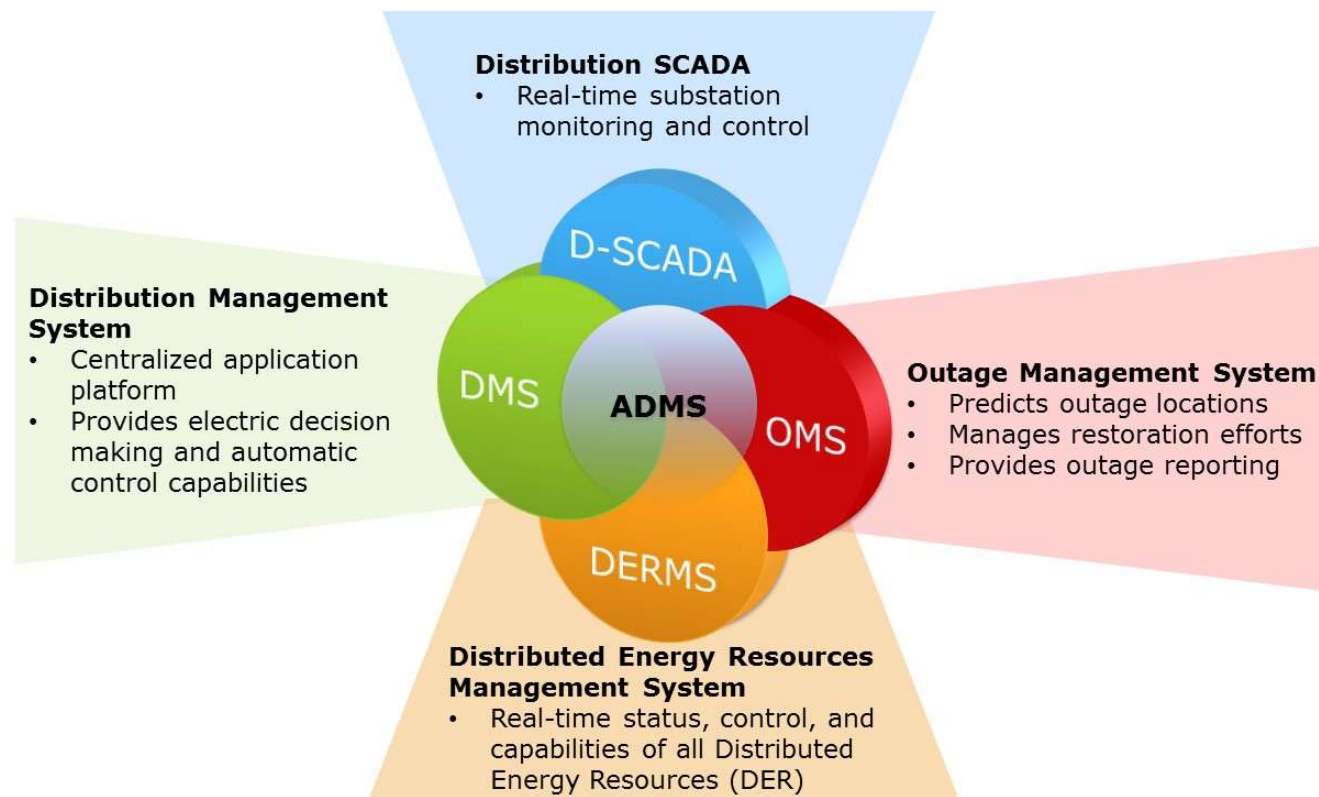




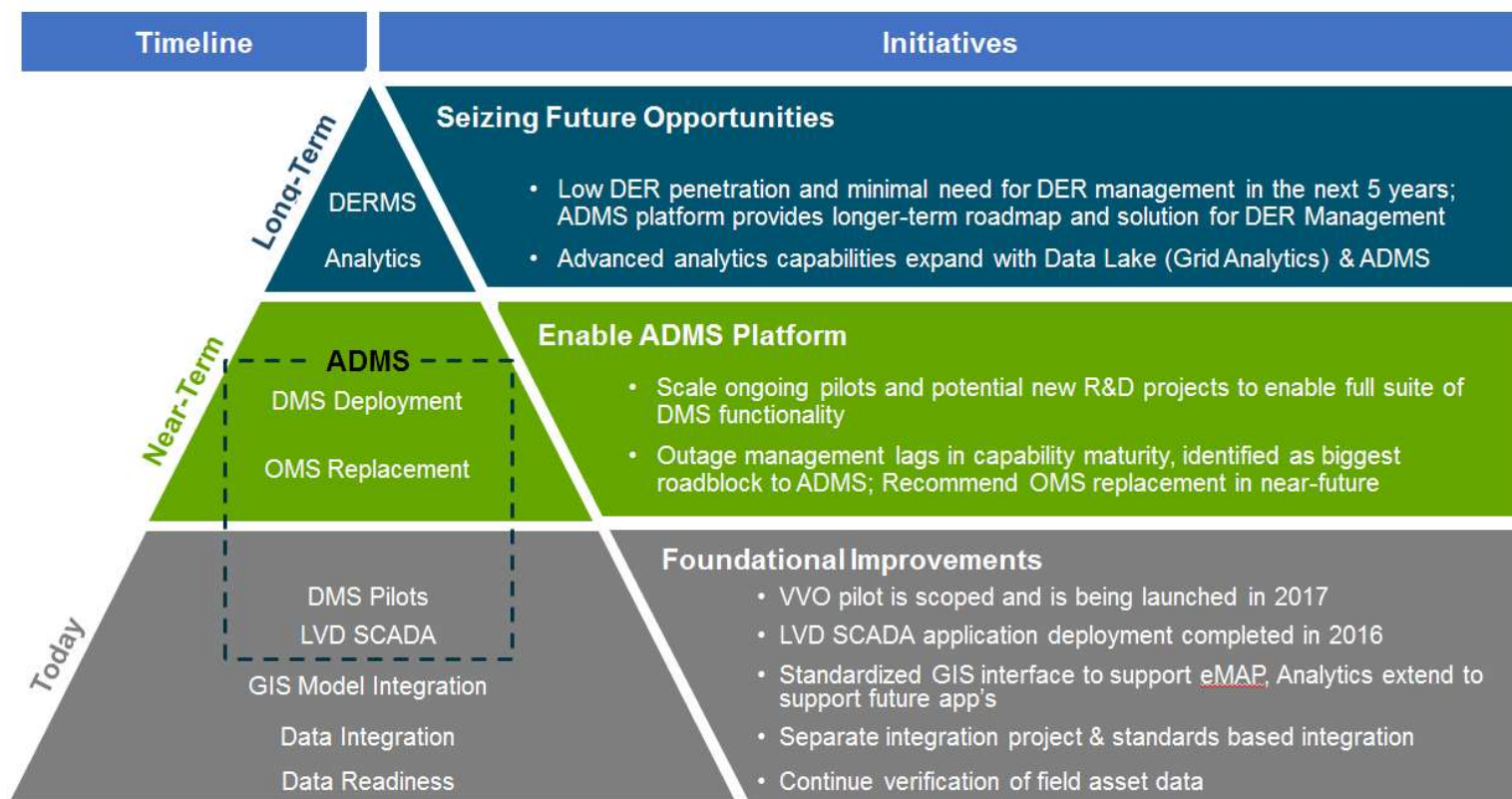
Current State

- Evaluated current landscape and complete some initial planning
 - Current State Assessment: Interview, CE ADMS requirements
 - Market and Vendor Analysis
 - Tactical Roadmap and Recommendations: Future vision, prioritized initiatives
- Consumers plan is to move to an ADMS, which includes replacing the existing OMS, resulting in a growing demand for a reusable network connectivity model interface(s) to address:
 - Minimize vendor “lock in”
 - Support additional system integrations and enterprise analytics
 - Minimize technical debt (promote reusability, flexibility, develop enterprise data resources)
- PI Historian has need for entities of the connectivity model (equipment)
 - Current “integration” batch file monthly / manual effort
 - Previously had a daily integration however with the upgrade to the GIS system that component is broken

Future State: Advanced Distribution Management System (ADMS)



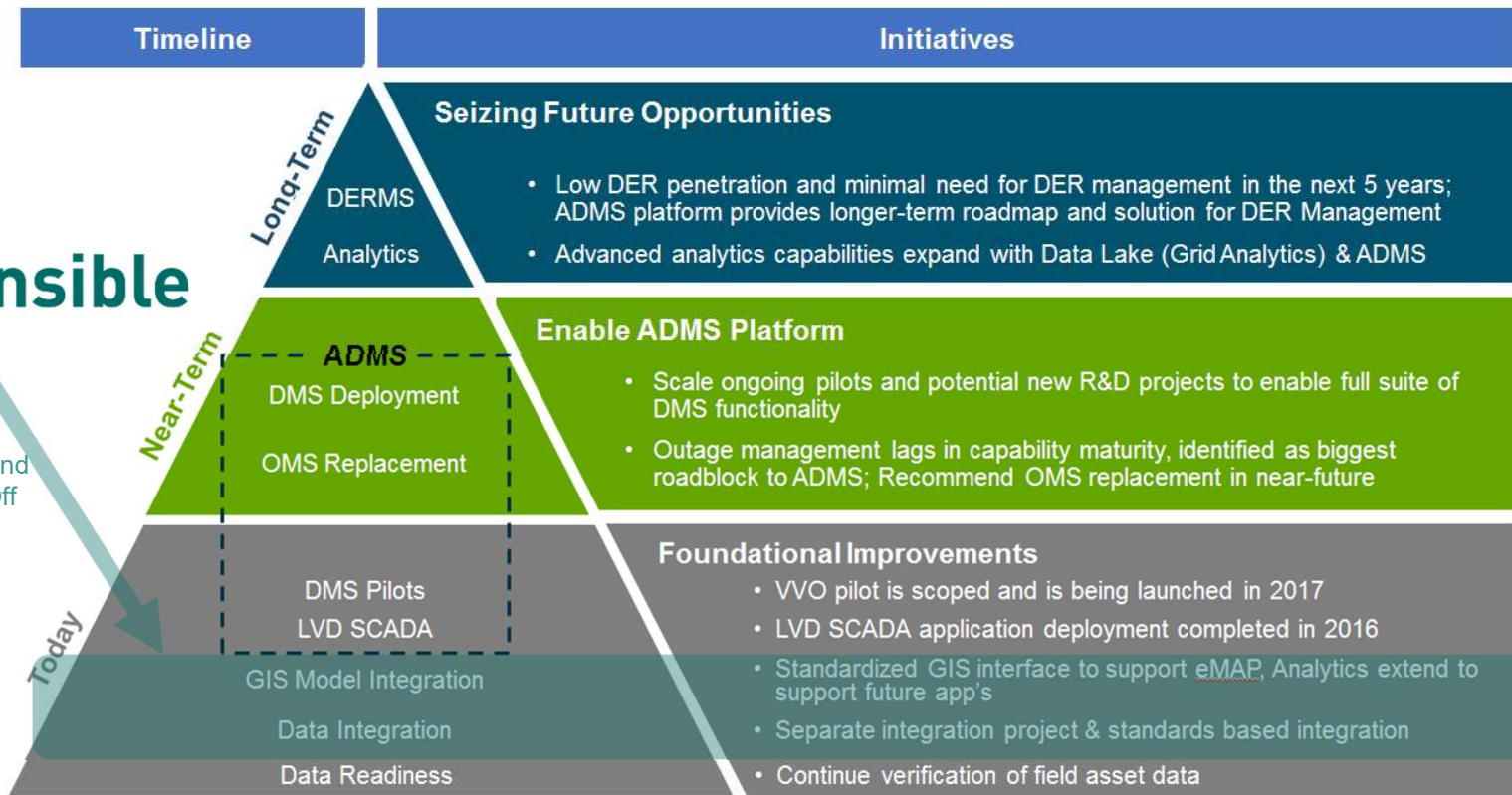
CE ADMS Long-term Plan



How does project align with ADMS Long-



Focus of this project and purpose of this Kick-Off Meeting





Project Goals and Objectives

Goal	Objectives
Establish end-to-end integration design for the connectivity network model.	<ul style="list-style-type: none">Map GIS connectivity model to CIM, construction of UML semantic model, and implementation model in DDL (SQL) or as determined by projectProvide a CIM based connectivity model interface definition for PI HistorianUnderstand and recommend possible ADMS connectivity network model needsRecommendation and roadmap for future phases implementation of integrations for ADMS along with expected level of efforts



Project Goals and Objectives

Goal

Establish foundation for ongoing ESM management, design and implementation going forward for Consumers Integration COE team.

Objectives

Develop a methodology and framework for ESM within Consumers

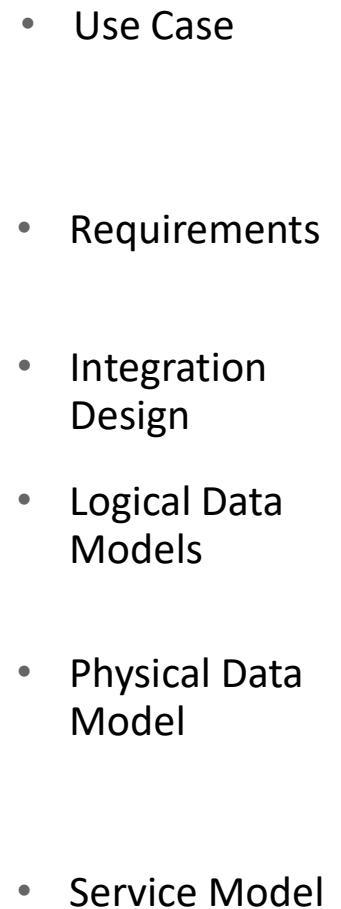
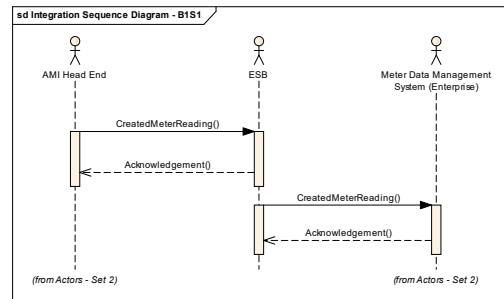
Develop the ESM integration process and provide recommendations as to roles and templates for projects to execute

Incorporate possible ADMS connectivity network model needs

Knowledge transfer and ESM management training of the Integration COE team

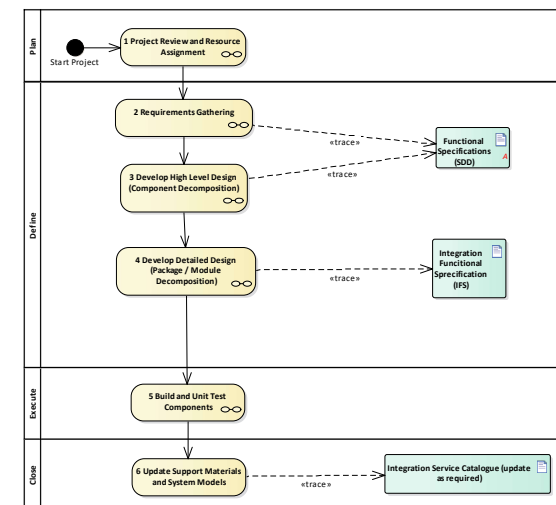
A wide banner image at the top of the page. It is divided into three distinct sections. The left section shows a control room with several operators seated at desks with multiple computer monitors displaying data. The middle section features a landscape with several high-voltage electrical transmission towers and power lines stretching across it. The right section is a green-tinted area containing a network diagram with various nodes and connecting lines, representing a communication or data network.

-



Establishing a Sustainable Process for the Future

- Determine the roles, process and deliverables to embed within the organization.
- Establish the function of the Integration Center of Excellence (COE) and how they work with other groups (i.e. Enterprise Architecture)





Q & A

